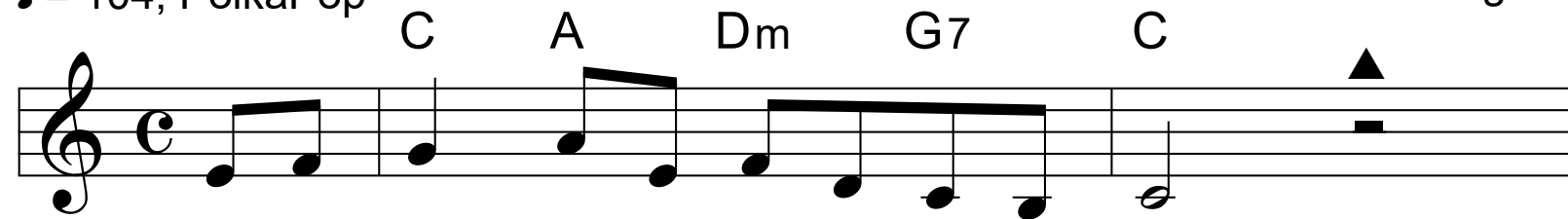


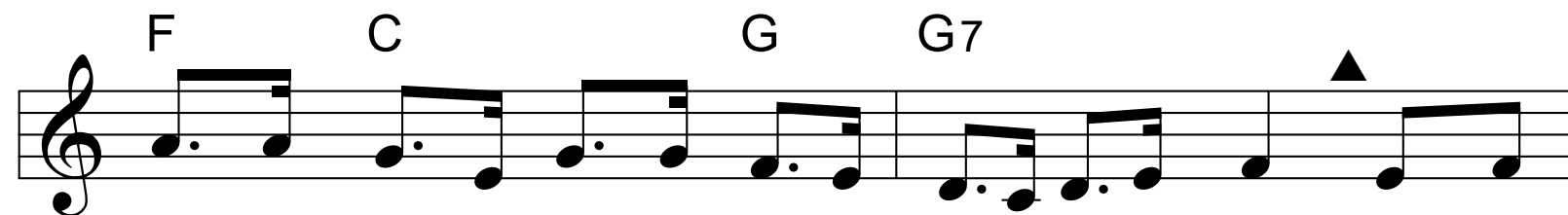
# Here We Come A-Wassailing 23

♩ = 104, PolkaPop

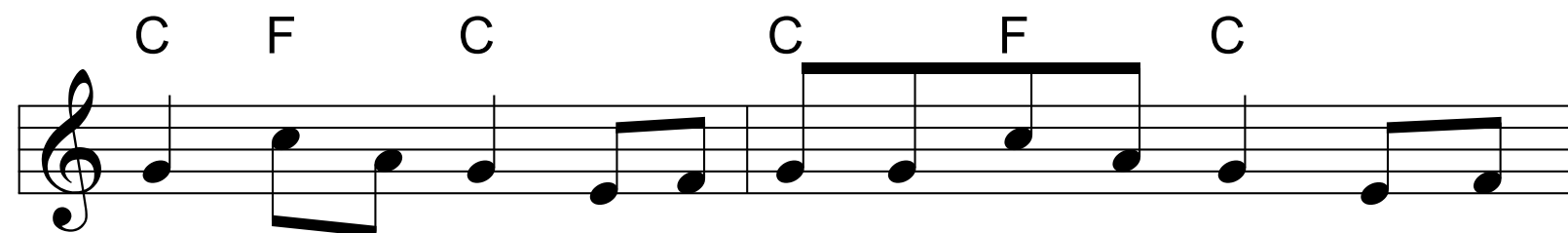
Old English



Here we come a-was-sail-ing a-mong the leaves so green;



Here we come a-wan-der-ing so fair\_ to be seen. *Love and*



*joy come to you, and to you your was-sail too; And God*



*bless you and send\_ you a Hap - py New Year, And God*



*send you a Hap - py New Year.*

# Here We Come A-Wassailing

23



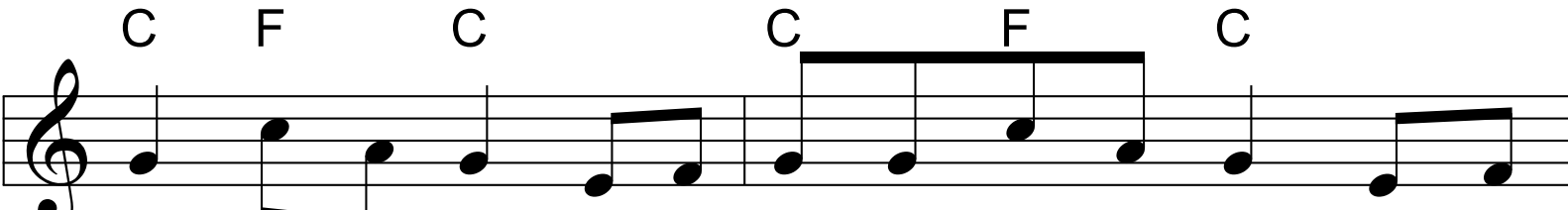
Bring us out a ta - ble and spread it with a cloth.

Chords: C, C, G, C




Bring us out a moldy cheese and lots of Christ-mas loaf. *Love and*

Chords: F, C, G, G7



*joy come to you, and to you your was-sail too; And God*

Chords: C, F, C, C, F, C



*bless you and send\_ you a Hap - py New Year, And God*

Chords: C, A7, Dm, G7, C, Dm



*send you a Hap - py New Year.*

Chords: C, A, Dm, G7, C, G7

# Here We Come A-Wassailing

23



C C G C

We are not dai-ly be-gars that beg from door to door.

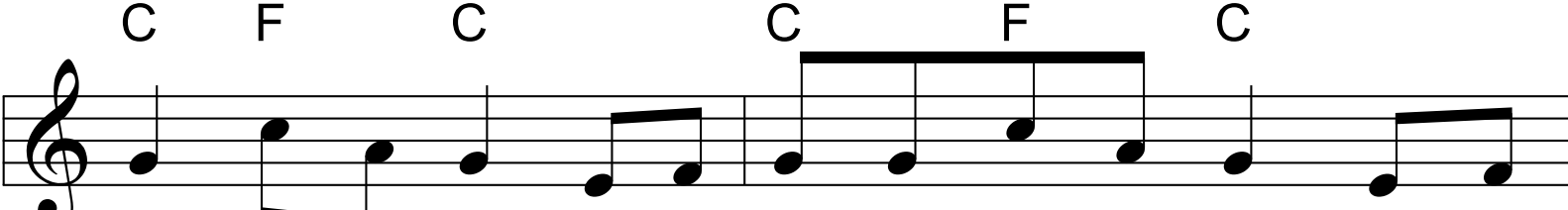
The first line of the musical score is on a single staff. It begins with a treble clef and a key signature of one flat (B-flat). The melody consists of eighth and quarter notes. Chord symbols C, C, G, and C are placed above the staff at the beginning, middle, and end of the line. The lyrics 'We are not dai-ly be-gars that beg from door to door.' are written below the staff.



F C G G7

We are neighbors children whom you have seen be-fore. *Love and*

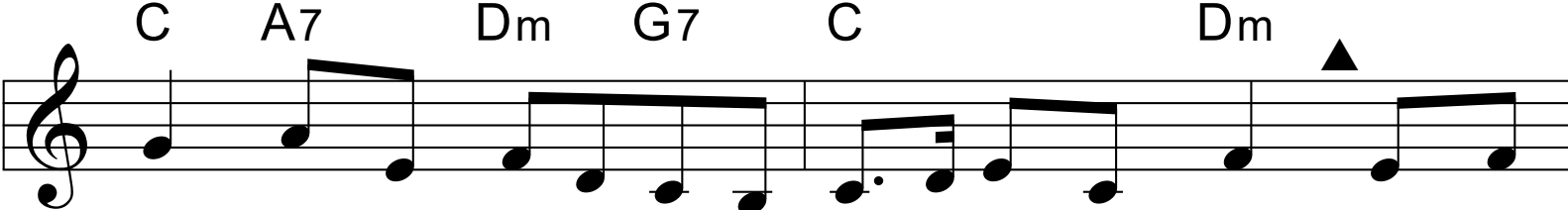
The second line of the musical score continues the melody. Chord symbols F, C, G, and G7 are placed above the staff. The lyrics 'We are neighbors children whom you have seen be-fore. Love and' are written below the staff. A triangle symbol is placed above the staff at the end of the line.



C F C C F C

*joy come to you, and to you your was-sail too; And God*

The third line of the musical score continues the melody. Chord symbols C, F, C, C, F, and C are placed above the staff. The lyrics 'joy come to you, and to you your was-sail too; And God' are written below the staff. A triangle symbol is placed above the staff at the end of the line.



C A7 Dm G7 C Dm

*bless you and send\_ you a Hap - py New Year, And God*

The fourth line of the musical score continues the melody. Chord symbols C, A7, Dm, G7, C, and Dm are placed above the staff. The lyrics 'bless you and send\_ you a Hap - py New Year, And God' are written below the staff. A triangle symbol is placed above the staff at the end of the line.



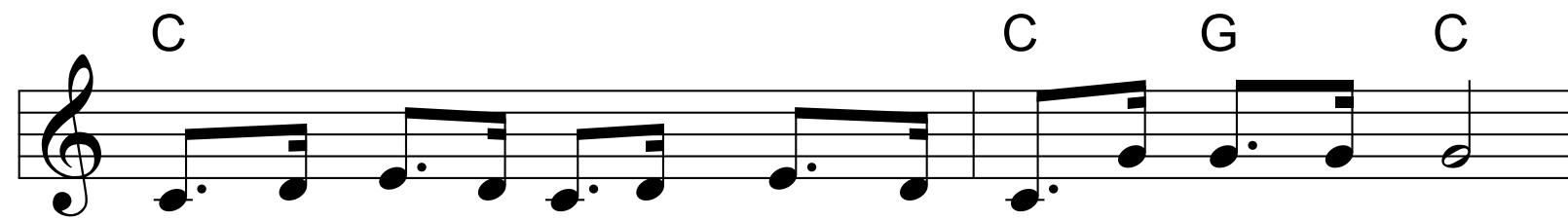
C A Dm G7 C G7

*send you a Hap - py New Year.*

The fifth line of the musical score continues the melody. Chord symbols C, A, Dm, G7, C, and G7 are placed above the staff. The lyrics 'send you a Hap - py New Year.' are written below the staff. A triangle symbol is placed above the staff at the end of the line.

# Here We Come A-Wassailing

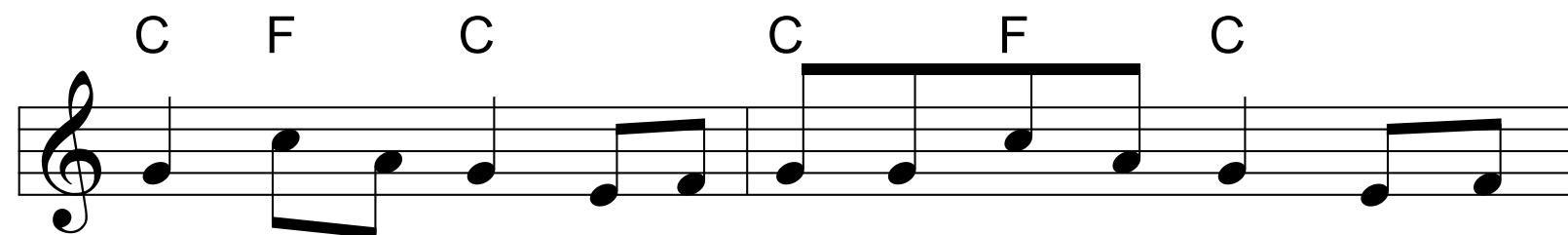
23



Bless the mas-ter of this house, like-wise the mis-tress too,



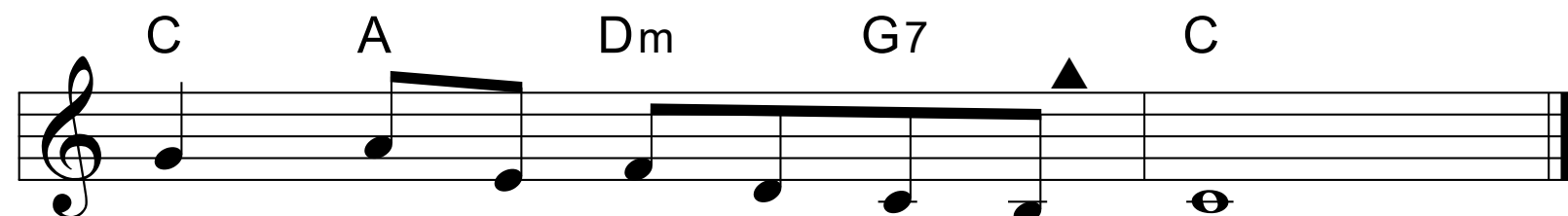
And the lit-tle chil-dren that round the ta-ble go. *Love and*



*joy come to you, and to you your was-sail too; And God*



*bless you and send\_ you a Hap - py New Year, And God*



*send you a hap - py New Year.*